



The Hampshire Dormouse Group County Survey

Landowner permission

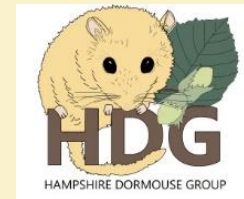
Getting landowner permission

Once you have selected some suitable sites within your 4km² you need to obtain permission to survey at least one of them.

Some may be obvious. It is likely that Gaston wood is owned by the owners of Gaston Grange and so a knock on the door and asking, might get permission granted.

A landowner pack is available to give to landowners to inform them of the project.





Getting landowner permission (1)

If there is not an obvious owner, the local parish council can be a good source of information.

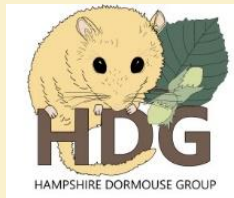
The screenshot shows the website for Bentworth Parish Council. At the top left is the logo 'Bentworth PARISH COUNCIL'. To the right are four navigation menus:

- Parish Council**
 - Planning
 - Minutes
 - Meetings
 - About
 - Councillors
 - Documents
- Diary**
 - Village Events
 - Picture Gallery
- The Villager**
 - Care Group
 - Church
 - Cricket Club
 - Garden Club
 - Pubs
- Neighbourhood Plan**
 - Introduction and Vision
 - News
 - Key Documents
 - Maps
 - Meeting Minutes
 - FAQs

Below the menus is a large image of a wooden notice board with a red-tiled roof, displaying various notices and a map. To the right of the image is a section titled 'Planning Applications' with the text: 'We maintain a list of planning applications that have been submitted to the Parish Council by East Hants District Council (EHDC)'. Below this text is a button labeled 'Read full article'. At the bottom right of the image area are navigation arrows.

If you are unable to find out who owns an area it may be possible to get the information from Land Registry. Searches cost £3.00 and will be funded by the HDG.

Getting landowner permission (2)



A further source of information is <https://magic.defra.gov.uk/> Input the grid reference for your area of interest.

Information button



Tick the 'land based schemes' in the table of contents and this will highlight areas where agri-environment schemes are in place. Clicking on the information button on the menu bar will show detail on the area highlighted, sometimes showing ownership information.

